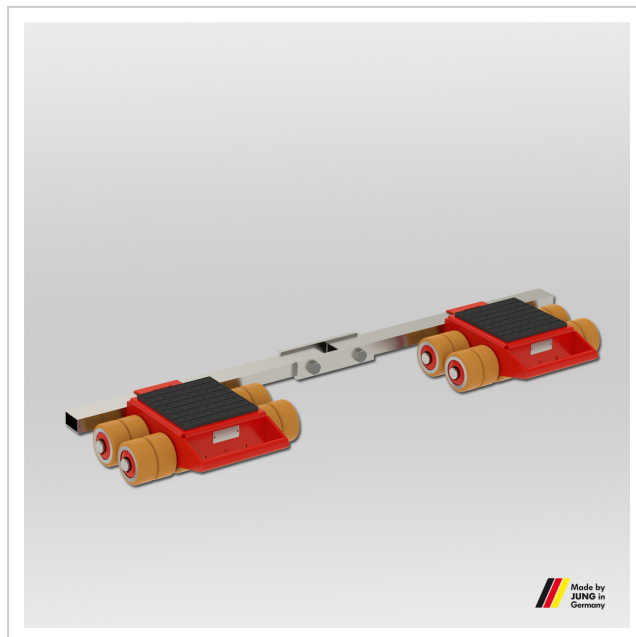


Adjustable trolley JFB 14 K Professional

High-performance transport trolley from JUNG. The JFB 14 K professional trolley transports loads up to 14 t with an installation height of 110 mm.

Product number 08 141 085-D

Weight 38kg



Product description

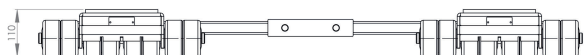
Advantages of the transport trolley JFB 14 K

- The double roller design results in dramatically easier steering due to reduced friction forces in castors. The much lower friction resistance also causes the trolleys on the rear axis to follow in a truer course.
- You need 30 % less power for steering.
- Higher capacity with professional castors, at same dimension as series K trolleys.
- The adjustable-width transport trolley consists of two transport units and connecting bar.
- Inspected according to technical regulation ANSI ? ASME (USA)

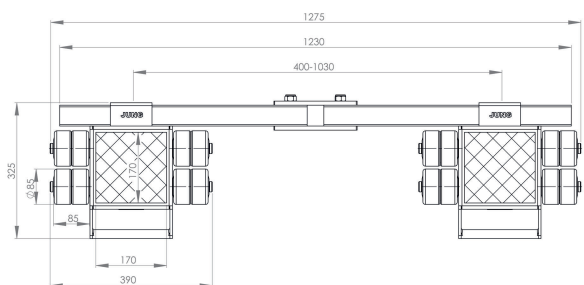
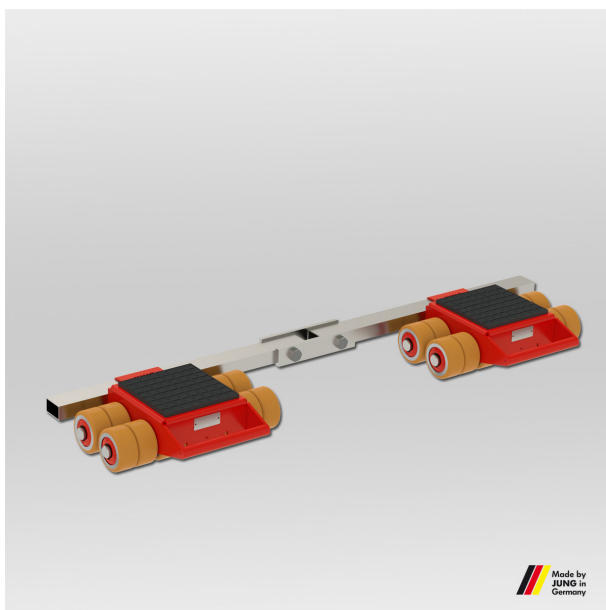
Product properties

Weight Professional (kg)	39
Number of twin castors (pcs.)	2 x 8
Castor dimensions (Ø x l mm)	85 x 85
Height (mm)	110
Supporting surface per cassette (mm)	170 x 170
Load capacity (t)	14
Load capacity (suitable)	26 - 30 t
Connecting bar with joint (mm)	1 230
Cassette dimensions (mm)	325 x 390
Cassettes adjustable from - to (mm)	400 - 1 030

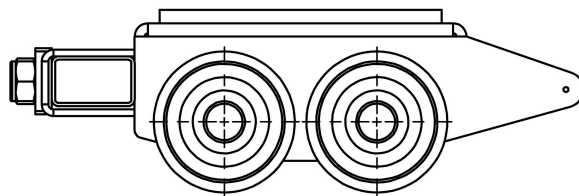
More images



JFB 14 K | Art.No. 08 141 085-D | Frontansicht | Front view



JFB 14 K | Art.No. 08 141 085-D | Draufsicht | Top view



JFB 14 K | Art.No. 08 141 085-D | Seitenansicht | Side view

