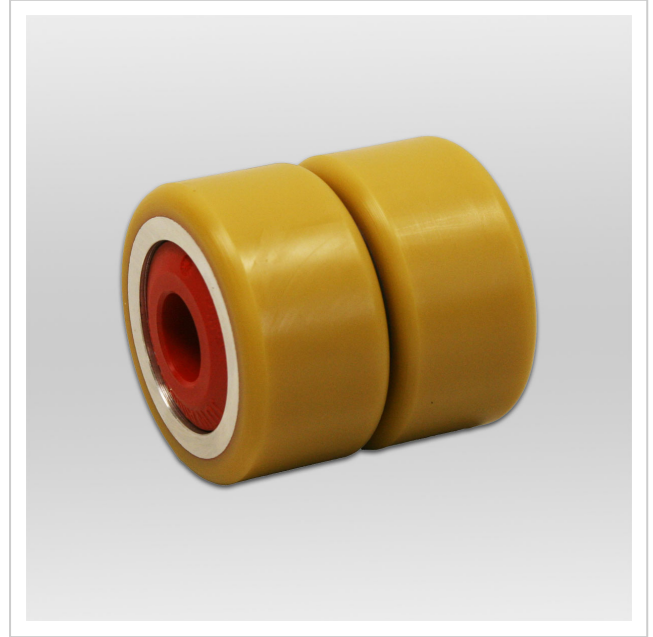


Castor JUWathan® plus series K professional

High-quality JUWathan® plus Series K Professional wheel.
Increased load capacity and exceptional maneuverability.

Product number 95 050 089-D

Weight 1.05kg



Product description

Advantages of the JUWathan® castor design

- The coating is molded around a steel core. Two precision ball bearings are pressed into the steel core.
- JUWathan® plus castor design: Based on the JUWathan® castor, the JUWathan®-plus castor has an improved coating material and a more advanced construction. An aluminum core replaces the steel core for easier handling at the same strength. A polyurethane based coating material is bonded around the aluminum core. This construction reduces the rolling resistance and weight by nearly 30 percent.
- We grant 5 years of warranty on operability of our wheels except improper use or normal abrasion.

Product properties

Inside diameter (mm)	25
Outside diameter (mm)	85
Fitting length (mm)	85
Load capacity (kg)	875
Weight (kg)	1,05

More images

