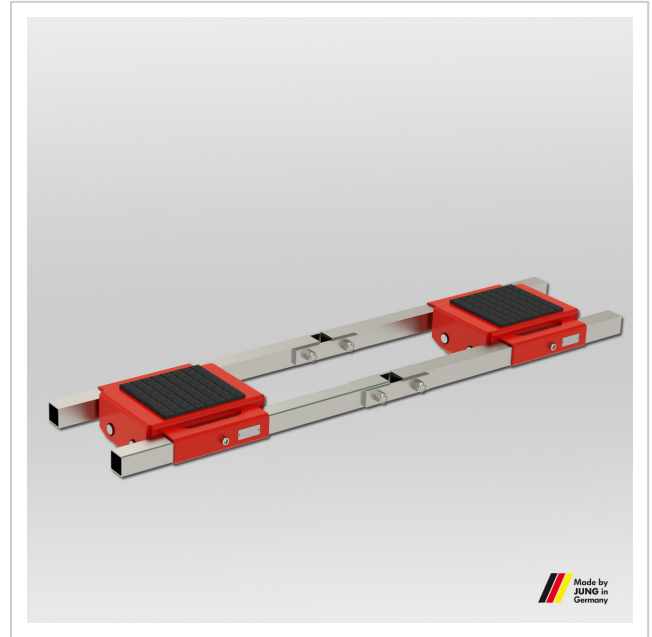


# Adjustable trolley JFB 16 S

High-performance transport trolley from JUNG. The JFB 16 S trolley transports loads up to 16 t with an installation height of 125 mm.

**Product number** 06 161 090-V

**Weight** 74kg



## Product description

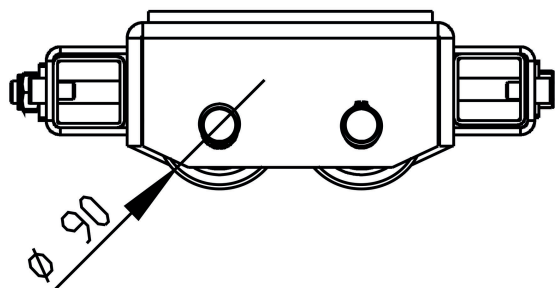
Advantages of the transport trolley JFB 16 S

- Pivoting cassettes and axles within the frame (except for JLB 16 S) assure even pressure distribution across all castors and across the floor.
- Slim castor design (60 mm fitting length) results in easier steering due to reduced friction forces also in curves.
- Very low height at only 125 mm, with high capacity and less own weight.
- All transport trolleys are ready for use: The adjustable-width transport trolley consists of two transport units and connecting bars.
- Inspected according to technical regulation ANSI ? ASME (USA)
- The transport trolleys have a installation height of only 125 mm, allowing them to fit under almost any load. The drawbar with tow eye makes maneuvering and positioning easier. JUNG uses ball-bearing rollers for its transport trolleys, which ensure smooth and quiet operation. The rollers are equipped with a wear-resistant JUWATHAN coating as standard.

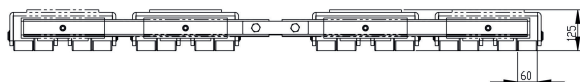
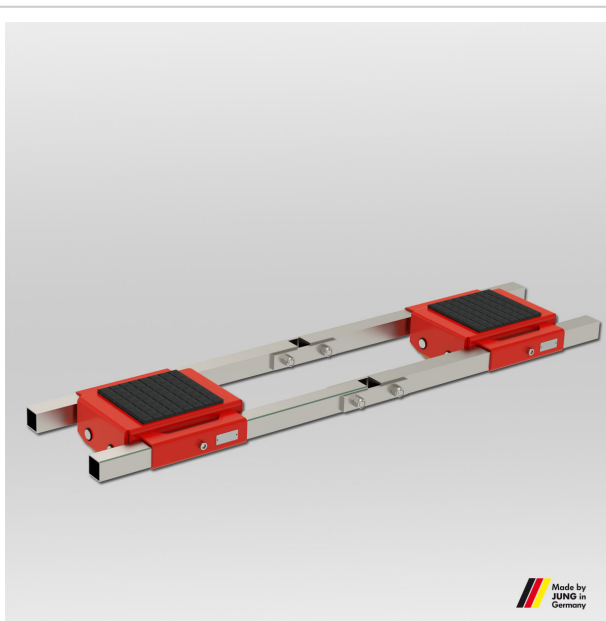
## Product properties

<b>Cassette dimensions (mm)</b>	370 x 330
<b>Cassettes adjustable from - to (mm)</b>	540 - 1 300
<b>Supporting surface per cassette (mm)</b>	200 x 220
<b>Castor dimensions (Ø x l mm)</b>	90 x 60
<b>Connecting bar with joint (mm)</b>	2 x 1 540
<b>Height (mm)</b>	125
<b>Load capacity (t)</b>	16
<b>Load capacity (suitable)</b>	31 - 40 t

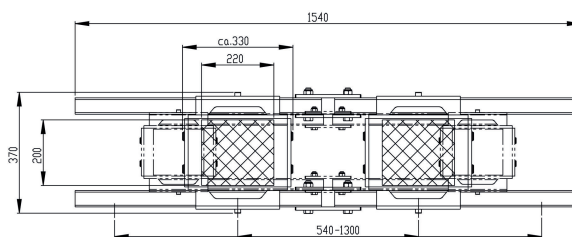
## More images



JFB 16 S | Art-No. 06 161 090-V | Seitenansicht | Seiten view



JFB 16 S | Art-No. 06 161 090-V | Frontansicht | Front view



JFB 16 S | Art-No. 06 161 090-V | Draufsicht | Top view

