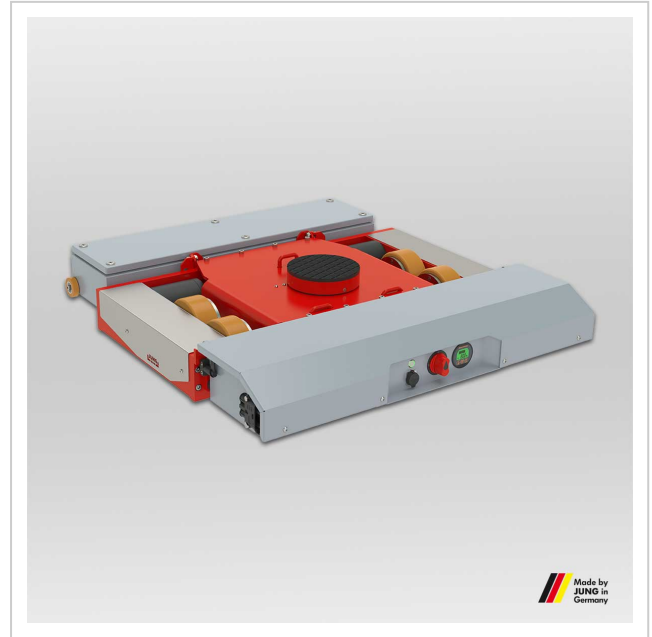


Transport trolley JLA-e 5/12 G with stroke facelift

The electric-powered transport trolley JLA-e 5/12 G is easy to operate and does not require an additional towing vehicle. Stroke of 50 mm and suitable for loads up to 12 tons.

Product number 22 005 210-G hub

Weight 195kg



Product description

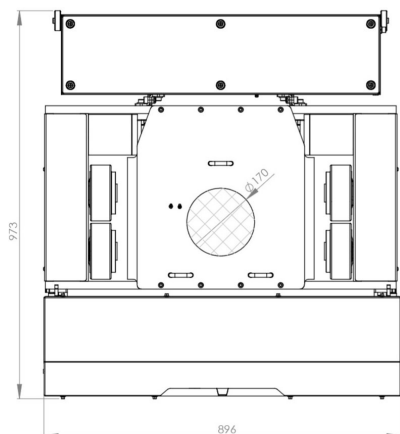
Advantages of electric-powered transport trolleys JLA-e 5/12 with stroke facelift

- No separate towing vehicle is required.
- Convenient, with a battery and user-friendly wireless remote control. The remote control can be switched from two-handed to one-handed operation (flexibly for left or right hand). One-handed operation makes it easy to keep the trolley on a precise straight path.
- The new battery indicator displays various parameters in real time, such as voltage, current, or the current charge level.
- High runtime (under full load and ideal conditions) of approximately 3–4 hours thanks to the directly driven motor.
- Short charging time for the self-propelled transport trolley.
- The unit can rotate 360°.
- The speed is infinitely adjustable.
- The advanced LiFePo4 cell technology, with higher energy density, allows for a more compact design.
- The trolley is compatible with all G-series tank rollers. However, the rollers are not included in the delivery.
- The side cover plates with the JUNG logo provide protection from dirt and a sleek, appealing design.

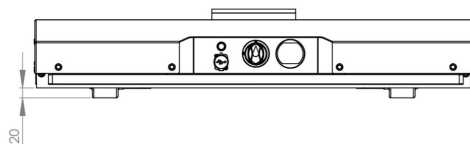
Product properties

Operational time (h)	4 - 5
Dimensions (mm)	975 x 900
Weight with battery (kg)	205
Battery and charger	1 x
Number of castors (Pieces)	4
Remote control, charger and belt with holder	1 x
Pulling capacity (t)	12
Stroke (mm)	50
Castor dimensions (Ø x l mm)	140 x 59
Height (mm)	180
Speed (m/min)	10
Supporting surface of turnable Ø (mm)	170
Load capacity (t)	5

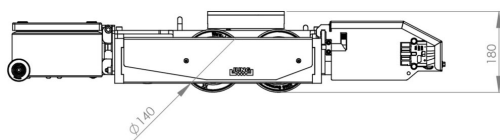
More images



JLA-e 5/12 G Hub | Art.No. 22 005 210-G Hub| Draufsicht | Top view



JLA-e 5/12 G Hub | Art.No. 22 005 210-G Hub| Frontansicht | Front view



JLA-e 5/12 G Hub | Art.No. 22 005 210-G Hub| Seitenansicht | Side view

